



# INDOFINE Chemical Company, Inc.

121 Stryker Lane, Bldg. 30, Suite 1 • Hillsborough, NJ 08844 • U.S.A.

Phone: (908) 359-6778 • FAX: (908) 359-1179

website: [www.indofinechemical.com](http://www.indofinechemical.com)

e-mail: [chemical@indofinechemical.com](mailto:chemical@indofinechemical.com)

## CERTIFICATE OF ANALYSIS

Cat. No.: 26-4750

Product:

**2-METHYL-4-NITROPYRIDINE-N-OXIDE**

(2-Methyl-4-nitropyridinium-1-olate)

CAS Number:

[5470-66-6]

Lot No.:

1001002

Molecular Formula:

C<sub>6</sub>H<sub>6</sub>N<sub>2</sub>O<sub>3</sub>

Molecular Weight:

154.12

Appearance:

Yellow crystalline powder

TLC:

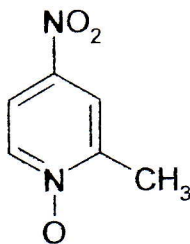
Chloroform:Methanol (9:1)

Solubility:

Soluble in Chloroform

Assay (HPLC):

99%





# INDOFINE Chemical Company, Inc.

121 Stryker Lane, Bldg. 30, Suite 1 • Hillsborough, NJ 08844 • U.S.A.

Phone: (908) 359-6778 • FAX: (908) 359-1179

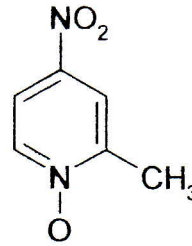
website: [www.indofinechemical.com](http://www.indofinechemical.com)

e-mail: [chemical@indofinechemical.com](mailto:chemical@indofinechemical.com)

## HPLC ANALYSIS

Date Acquired : 2/4/2010 1:55:20 PM  
Acquired by : Madhuri  
Sample Name : 2-Methyl-4-Nitropyridine N-Oxide  
Sample ID : Indofine Lot No-1001002  
Injection Volume : 20 uL  
Data Filename : 040210D.lcd  
Method Filename : Linear Gradient.M.lcm

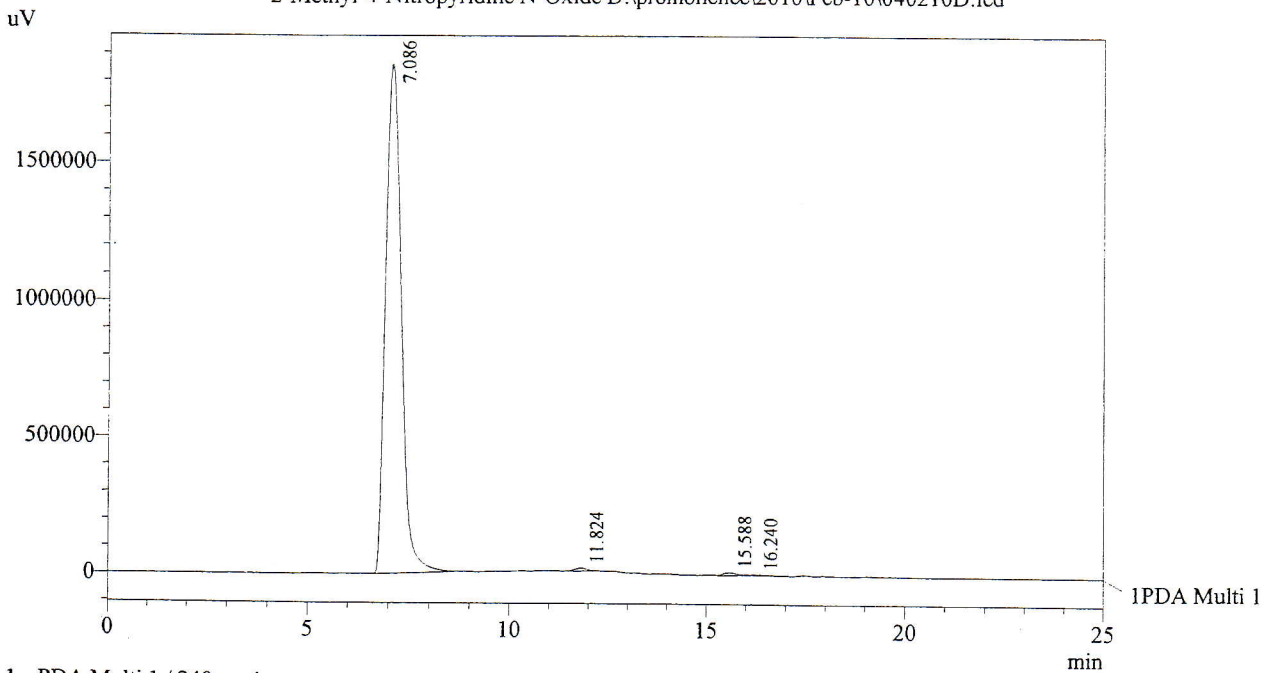
Cat. No.: 26-4750  
Product: 2-Methyl-4-Nitropyridine-N-Oxide  
Lot No.: 1001002



Description:  
Column : Inertsil C-18, 250X4.6mm 5.0µm  
Flow : 1.000mL/min.  
Mobile Phase : A(Water 0.05% TFA) : B( ACN)  
00.01 : 90 : 10  
12.00 : 10 : 90  
20.00 : 10 : 90  
23.00 : 90 : 10

Chromatogram

2-Methyl-4-Nitropyridine N-Oxide D:\promonence\2010\Feb-10\040210D.lcd



PeakTable  
PDA Ch1 240nm 4nm

Peak#	Ret. Time	Area	Height	Area %
1	7.086	49270929	1857316	99.091
2	11.824	196970	10652	0.396
3	15.588	191109	9517	0.384
4	16.240	64141	1929	0.129
Total		49723148	1879414	100.000